

# Do you need a home repair? We may be able to offer a hand up!

Habitat for Humanity of North Idaho offers a program designed to help Kootenai County families in need with a hand up, not a hand out. *A Brush With Kindness* is part of Habitat for Humanity's Neighborhood Revitalization Initiative (NRI). This program offers an expanded array of home improvements and repairs including weatherization, critical home repair, and complete neighborhood revitalization. The Neighborhood Revitalization Initiative enables Habitat affiliates to serve more families and strengthen communities.



## Contact Us



7950 N. Meadowlark Way, Suite E  
Coeur d'Alene, ID 83815  
(208) 762-4663, Ext. 2  
[abwk@northidahohabitat.org](mailto:abwk@northidahohabitat.org)

[www.northidahohabitat.org](http://www.northidahohabitat.org)



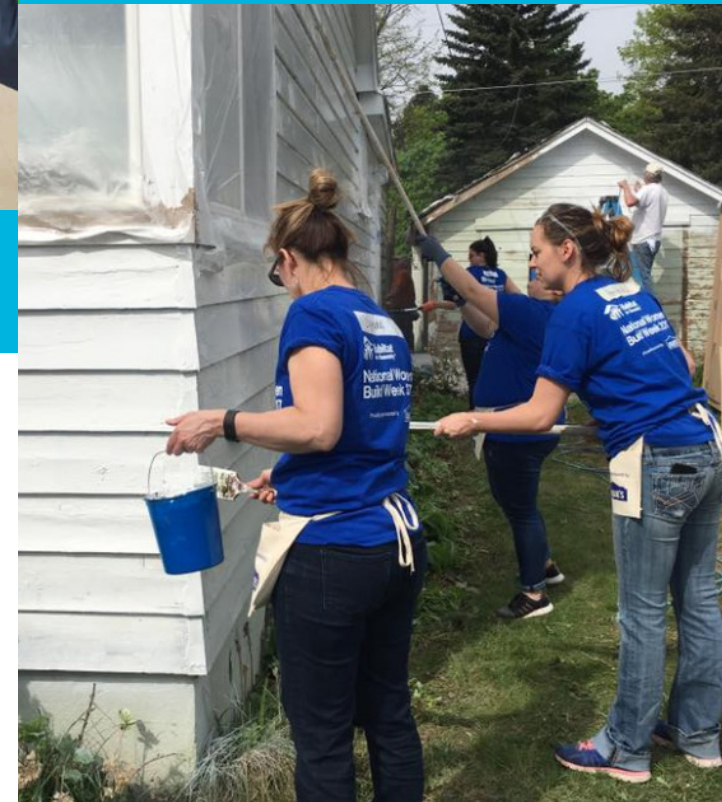
Follow us on social media



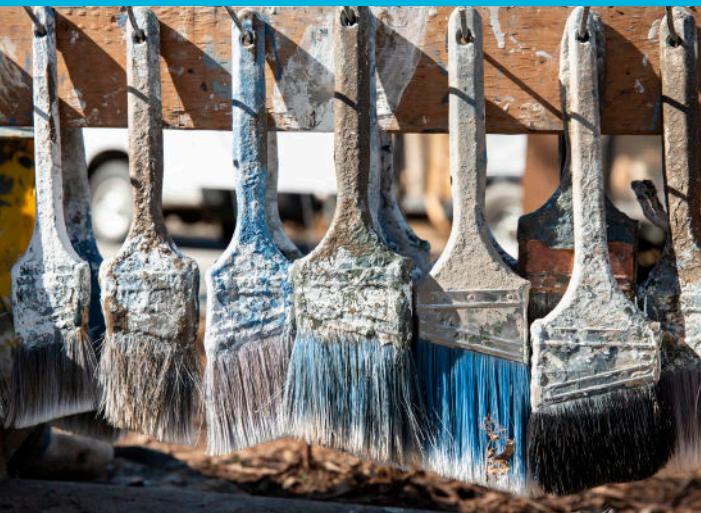
[@northidahohabitat](https://www.instagram.com/northidahohabitat)



## Home Repair Program



Providing Critical Home Repairs for Low-Income Homeowners in Kootenai County





# A Brush With Kindness

A Brush With Kindness is a repair program through Habitat for Humanity of North Idaho that provides simple home repairs for low-income homeowners in Kootenai County and helping seniors age in place. A Brush With Kindness is a volunteer-driven construction program, just like our home building program, and families must be willing to partner on the repair with “sweat equity.”

## What services are offered through A Brush With Kindness?

We will work with families to identify the most important repair needs for their home. Some services may include:

### ✓ House Painting

To alleviate health, life and safety/code issues. Includes prep work and minor repairs to ensure a quality paint job.

### ✓ Yard Cleanup

Including brush and junk removal. (Not offered as a maintenance service.)

### ✓ Handicap Accessibility

Installation of ramps, handrails, and more.

### ✓ Critical Repairs

To alleviate health, life, and safety/code issues.

### ✓ Weatherization

To improve a home's energy efficiency and indoor air quality.

## Who is eligible?

- ✓ Applicant must own and occupy property to be repaired.
- ✓ Earn 80% or less of the median area income. Income guidelines are based on family size and current median area income. See chart below.
- ✓ Be able to repay a loan for the cost of the home repair. We offer a 20% discount for paying in advance.
- ✓ Be willing to partner on the repair, which includes “sweat equity.”

Family Size	Max Gross Monthly Income	Max Gross Annual Income
1	\$4,400	\$52,800
2	\$5,100	\$61,200
3	\$5,700	\$68,400
4	\$6,300	\$75,600
5	\$6,800	\$81,600
6	\$7,300	\$87,600
7	\$7,800	\$93,600
8	\$8,300	\$99,600

Effective: 5/1/25

## How do families apply?

To apply to *A Brush With Kindness*, please call or email us for an application. If you need help completing the application, please let us know.



(208) 762-4663, Ext. 2



abwk@northidahohabitat.org



## Do you need volunteers for A Brush With Kindness?

**YES!** A Brush With Kindness is a volunteer-driven construction program, just like our home building program. We are looking for skilled people who can be volunteer Crew Leaders and for anyone else – skilled or unskilled – who would like to help with a home repair.